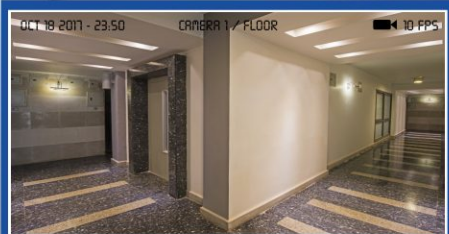


LIVE +

LIFT VIDEO SURVEILLANCE SYSTEM



PRESS DOOR OPEN BUTTON
WITHIN 10 SECONDS OR WAIT
FOR ELEVATOR RETURNING
TO PREVIOUS FLOOR



Das Live-Bild in der Kabine zeigt die
Garage oder den Flur vor dem Aufzug.
Fühlen Sie sich sicher, öffnen Sie die
Tür durch Tasterdruck.
Ansonsten kehrt die Kabine
automatisch zur Startetage zurück.

WATCH

IP CAMERA



Matisse
display

P
U
S
H

- 1) VIEW THE LIFT LANDING AREA **DIRECTLY** FROM THE CAR DISPLAY
- 2) **CONFIRM** DOOR OPENING WITHIN 10 SECONDS
- 3) WAIT AND **GET BACK TO PREVIOUS FLOOR** IN CASE OF PROBLEMS



LIVE+ IS PART OF THE
PITAGORA ELECTRIC SYSTEM

LIVE+ MEANS ACTIVE SECURITY FOR FREQUENT USERS OF THE LIFT

LIVE+ is an integrated video surveillance system for lifts. It allows the monitoring of landing areas from within the car and enables door opening only after explicit consent of the passenger:

HOW IT WORKS?

- ✓ With LIVE+ the Playboard Controller can define one or more "Protected Floors" in the lift.
- ✓ A webcam positioned in the landing area of the Protected Floors and connected to the car display Matisse shows the entrance before doors are open.
- ✓ The Matisse display prompts the passenger to confirm door opening through the pressure of the door open button within 10 seconds after landing.
- ✓ If no consensus is given, the lift keeps doors closed and returns to previous floor.

LIVE+ adopts commercial IP cameras for Protected Floors and a LAN network (existing or new) to allow the communication between the Matisse display and the floor cameras.

SYSTEM LAYOUT

